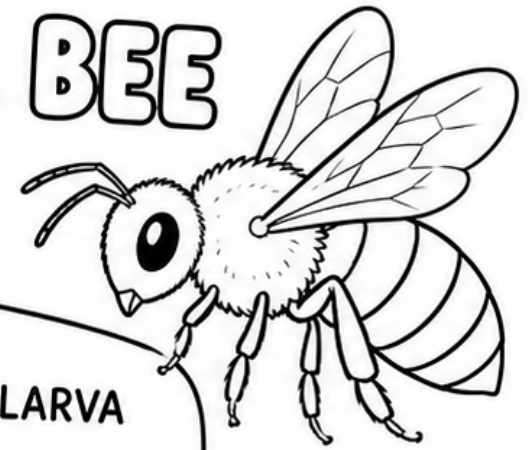


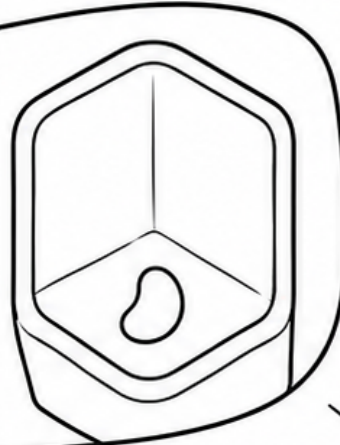
THE LIFE CYCLE OF A BEE

Bees go through 4 amazing stages in their life cycle.



1 EGG

The queen bee lays a tiny egg in a honeycomb cell.



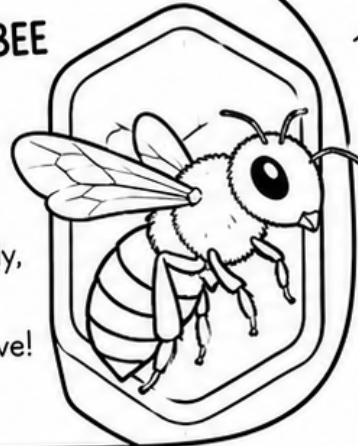
2 LARVA

The egg hatches into a larva. It is fed lots of nutritious food and grows bigger.



4 ADULT BEE

A fully formed bee emerges from the cell. It is ready to fly, gather nectar and help the hive!



3 PUPA

The larva spins a cocoon and changes into a pupa. It rests while it develops.

