

# Beetle Drive

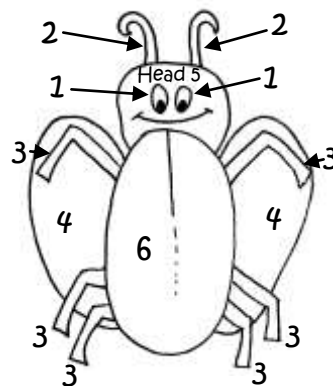
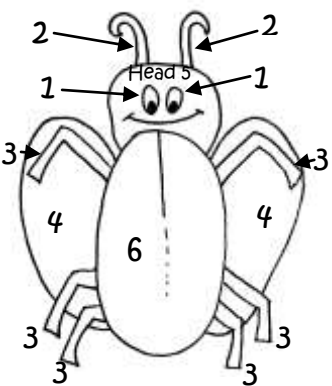
Throw the dice and draw your beetle. You must draw a body first. You need to draw a head before you fill in the eyes and antennae. The round ends when the first person in the room draws a beetle and shouts "BEETLE". Add up your scores. If you have the highest table score move to the table on the right, if you have the lowest move to the table on your left.

Name \_\_\_\_\_

# Beetle Drive

Throw the dice and draw your beetle. You must draw a body first. You need to draw a head before you fill in the eyes and antennae. The round ends when the first person in the room draws a beetle and shouts "BEETLE". Add up your scores. If you have the highest table score move to the table on the right, if you have the lowest move to the table on your left.

Name \_\_\_\_\_



Score

Score

Score

1
2
3

Score

Score

Score

1
2
3

Score

Score

Score

4
5
6

Score

Score

Score

4
5
6

Total Score \_\_\_\_\_

Total Score \_\_\_\_\_